



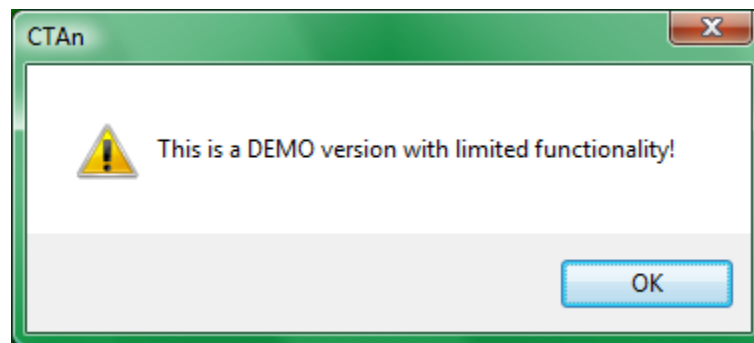
## Licensing of SkyScan CT-analyser

The SkyScan CT-analyser program (“CTAn”) requires electronic licensing, which involves a small file (*ctan.lic*) and some text information. The licensing process is very straightforward. As a licensed user you are free to apply the license to other computers within your institute, and SkyScan does not limit the number of computers on which you can license CTAn. The following is the procedure for (1) obtaining a license for CTAn, (2) applying it on additional computers, and (3) upgrading CTAn.

PLEASE NOTE: SkyScan users all have a CTAn license in your control software folder. If you already have a CTAn license please ignore and skip part 1. Go to part 2. You only need one CTAn license. Upgrade versions of CTAn do not require a new license. To transfer CTAn to another computer just copy the license you already have to the other computer or computers, following the procedure in part 2.

### (1) How to obtain and apply the license to SkyScan CT-analyser

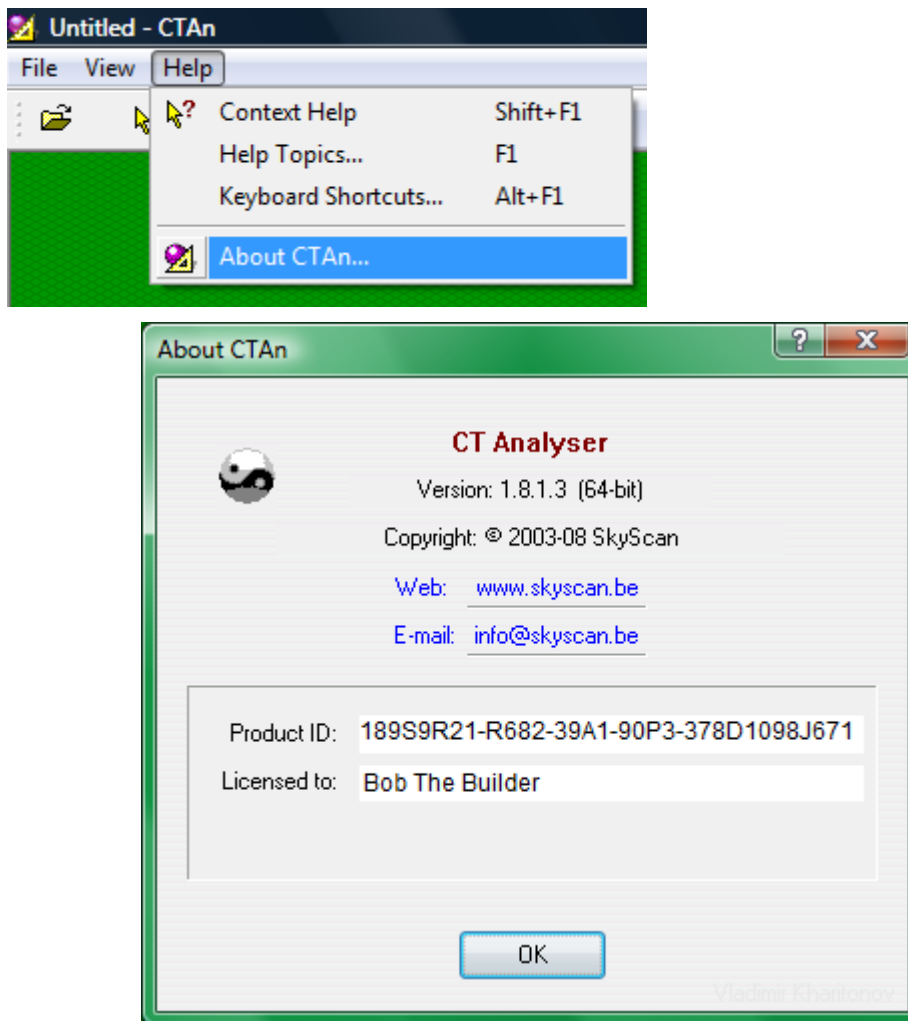
- a) Download *ctan.exe* from the SkyScan website ([www.skyscan.be](http://www.skyscan.be), products / software downloads), place it in a directory such as C:\skyscan. (Note – the program runs directly from the *ctan.exe* file – there is no installation needed).
- b) Run CTAn by double-clicking on the *ctan.exe* file or its desktop shortcut. You will get a “demo version” message indicating limited functionality of the unlicensed version. Click OK.



- c) At the top menu bar go to help / about CTAn and record the product ID number (see figure 1, below). Then close CTAn.
- d) Email this number to [sasov&skyscan.be](mailto:sasov&skyscan.be) with your request for a license (temporary or permanent as appropriate). Mention your name and institute name. (Replace & with @ in the

email address.)

- e) You will receive an email with the license file (*ctan.lic*): place this in the same directory as *ctan.exe*. This email will also list your name, your institute and your registration code. It is **very important** that you keep a file (text or otherwise), containing all these three things (name, institute, and registration code) exactly as written in the license email. Safely store this file together with the *ctan.lic* file. This information and the *ctan.lic* file will be needed for licensing CTAn on other computers (see section 2).
- f) Now launch *ctan.exe* again. When CTAn – while unlicensed – “sees” the *ctan.lic* file in place in the same folder, a dialog box will open asking you for three things: your name, institute name and registration code (see figure 2, below). Fill in these three fields and click on OK. The CTAn program will then restart, after which it will be permanently licensed on that computer.



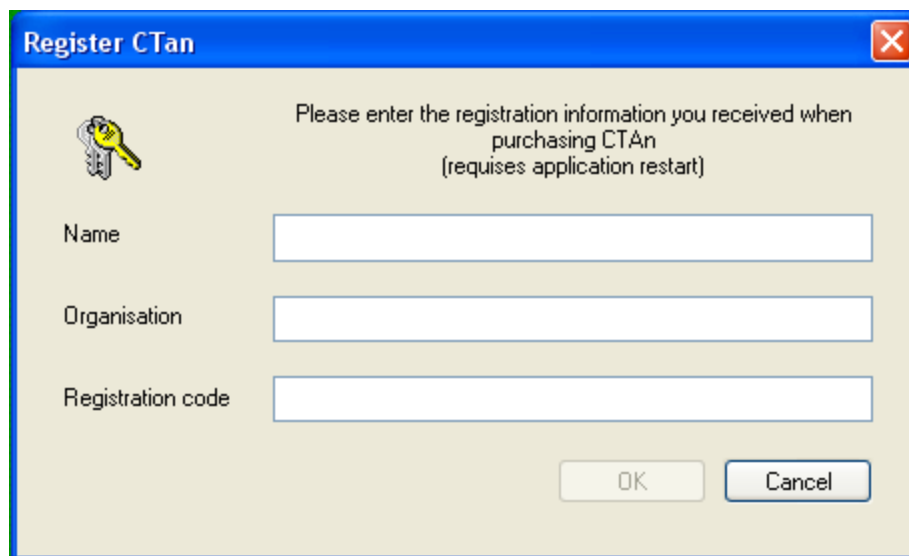
**Figure 1.** The CTAn product ID number can be found at help / about CTAn. Please note: the “product ID” is not the same as the registration code used to license CTAn.

## (2) How to apply the license for SkyScan CT-analyser to another computer within your institute

- a) On the “new” computer on which you wish to license SkyScan CTAn, set up a directory C:\skyscan. Copy the program file *ctan.exe* into this directory. (You should also copy *ctvol.exe* into this folder to allow the Skyscan CT-volume 3d visualisation program to run on the computer, plus the Dataviewer program and the “chm” help files for all these programs.)
- b) From the computer on which CTAn is already licensed, find the *ctan.lic* file (in the same directory as *ctan.exe*) and copy it into the C:\skyscan directory on the new computer.

As mentioned above, you should have stored in a safe location, along with the *ctan.lic* file, a file containing the three important things: your name and institute (both exactly as written in the license email) and the registration code. (If you have a SkyScan scanner, a text file with this information should exist in the c drive of your scanner workstation, in the folder with the scanner software.)

- c) Now launch *ctan.exe* on the new computer. When CTAn “sees” the *ctan.lic* file in place, a dialog box will open asking you for the three things: your name, institute name and registration code. Fill in these three fields and click on OK. The program will restart, and from then on CTAn will be permanently licensed on that computer.



**Figure 2.** When *ctan.exe*, before having been licensed, is run on a computer with the file *ctan.lic* in the same folder as *ctan.exe*, this dialog will open asking for the three registration items: name, organisation and registration code. Please note: the registration code used to license CTAn is not the same as the “product ID”.

### (3) How to upgrade to a newer version of SkyScan CT-analyser

- a) Obtain the new "ctan.exe" file, either downloaded (zipped) from the SkyScan website or otherwise.
- b) Go to the folder with your existing licensed CTAn files, such as C:\Skyscan. Back up your previous version, for instance by changing its name from "ctan.exe" to "ctan1910.exe" or something similar, or moving it to a backup folder. (You don't necessarily need to back up all old versions, just one or two.)
- c) Now copy the new version of "ctan.exe" into the folder where the existing licensed and active version of "ctan.exe" is located, overwriting this file (if it has not been re-named or moved).
- d) DO NOT copy the new "ctan.exe" file to any other location on your computer.
  - i. If this file is run from another location without the necessary "ctan.lic" file, it will run in restricted "demo mode" – not much use.
  - ii. You gain no added capability by having multiple copies of "ctan.exe" on your computer. All you gain is confusion when it comes to upgrading the program, and the possibility of accidentally running different versions of the program.
  - iii. You can run multiple CTAn instances from the one licensed "ctan.exe" file.
- e) Together with the new "ctan.exe" file you will find a "ctan.chm" file: this is the help file, it is important and should be kept together with your "ctan.exe" file in the licensed location (not anywhere else). When upgrading CTAn, be sure to upgrade the chm help file – if a new chm file is available. If it is not – continue using the current chm file.
- f) Together with the new "ctan.exe" file you will also find a "ctan.txt" file: this is the log file describing the changes between versions of CTAn.
- g) PLEASE NOTE: **you only require one CTAn license** – the "ctan.lic" file and accompanying data (user, institute, ID number). You do not need a new license for a new CTAn version. Nor do you need a new license to copy and run CTAn on another computer – you only need a copy of your existing license – follow the instructions in part 2.
- h) There are not different demo versions and licensed versions of "ctan.exe" file. If you see the "DEMO MODE ONLY" message, it means that you have copied the "ctan.exe" file into the wrong place on your hard drive without the "ctan.lic" file. Put it in the correct place instead (follow parts 3 a, b, c, d).

Do not keep multiple copies of CTAn on your computer, or indeed of any of the other SkyScan software. You gain no additional capability by doing so, and only create confusion and the risk of having multiple versions.